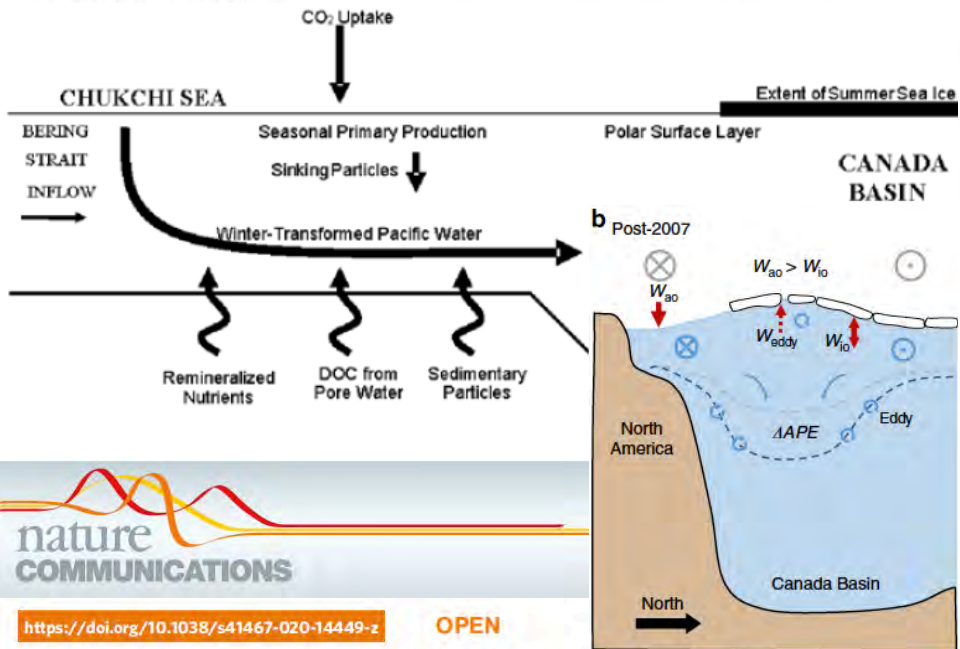
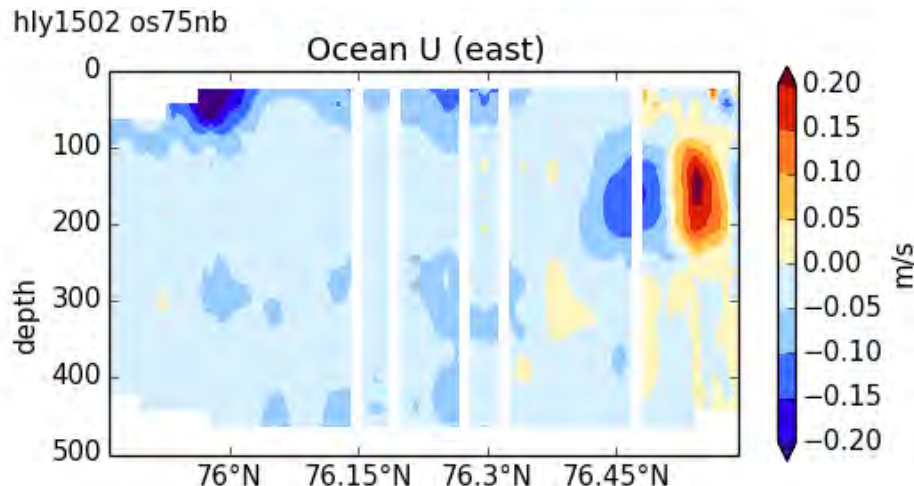


## Eddy transport of organic carbon and nutrients from the Chukchi Shelf: Impact on the upper halocline of the western Arctic Ocean

Jeremy T. Mathis,<sup>1</sup> Robert S. Pickart,<sup>2</sup> Dennis A. Hansell,<sup>1</sup> David Kadko,<sup>1</sup> and Nicholas R. Bates<sup>3</sup>



## GN01 station 14 eddy 100-200 m

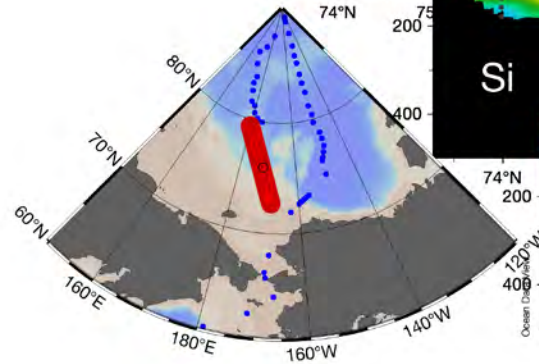
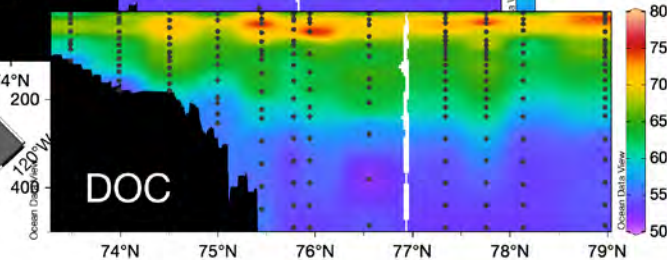
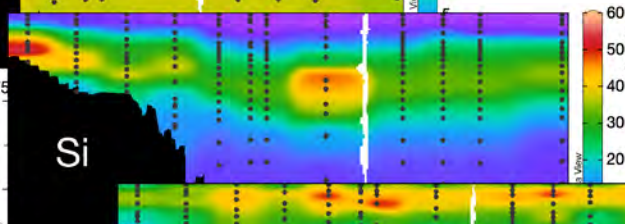
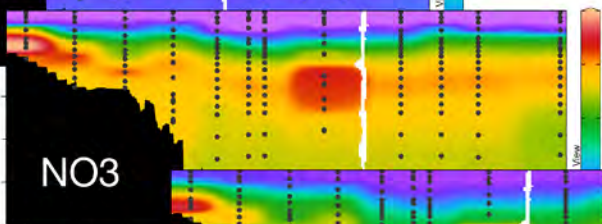
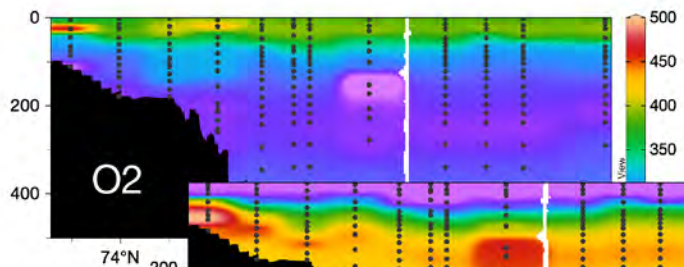
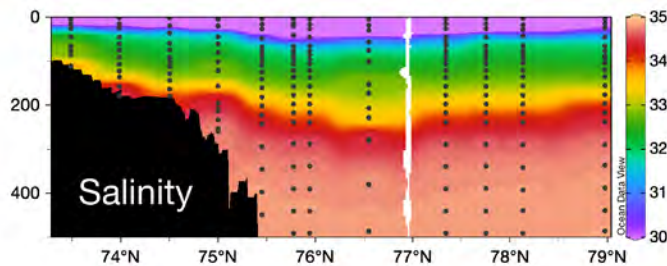
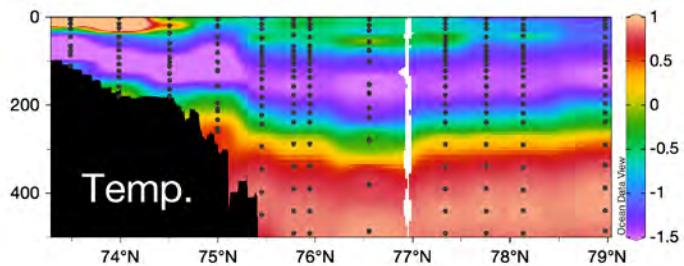


os75nb: last time 2015/08/21 23:52:46

Andrew Margolin  
University of British Columbia  
@arctic\_andy

## Enhanced eddy activity in the Beaufort Gyre in response to sea ice loss

Thomas W.K. Armitage<sup>1\*</sup>, Georgy E. Manucharyan<sup>2</sup>, Alek A. Petty<sup>3,4</sup>, Ron Kwok<sup>1</sup> & Andrew F. Thompson<sup>5</sup>



- CO<sub>2</sub> System
- Shelf-Basin Interactions
- 2005/1994
- NOAA WOD
- CIOOS

- Eddy transport of TEIs?
- Synthesis paper?
- Potential for process study?

Margolin, cont.