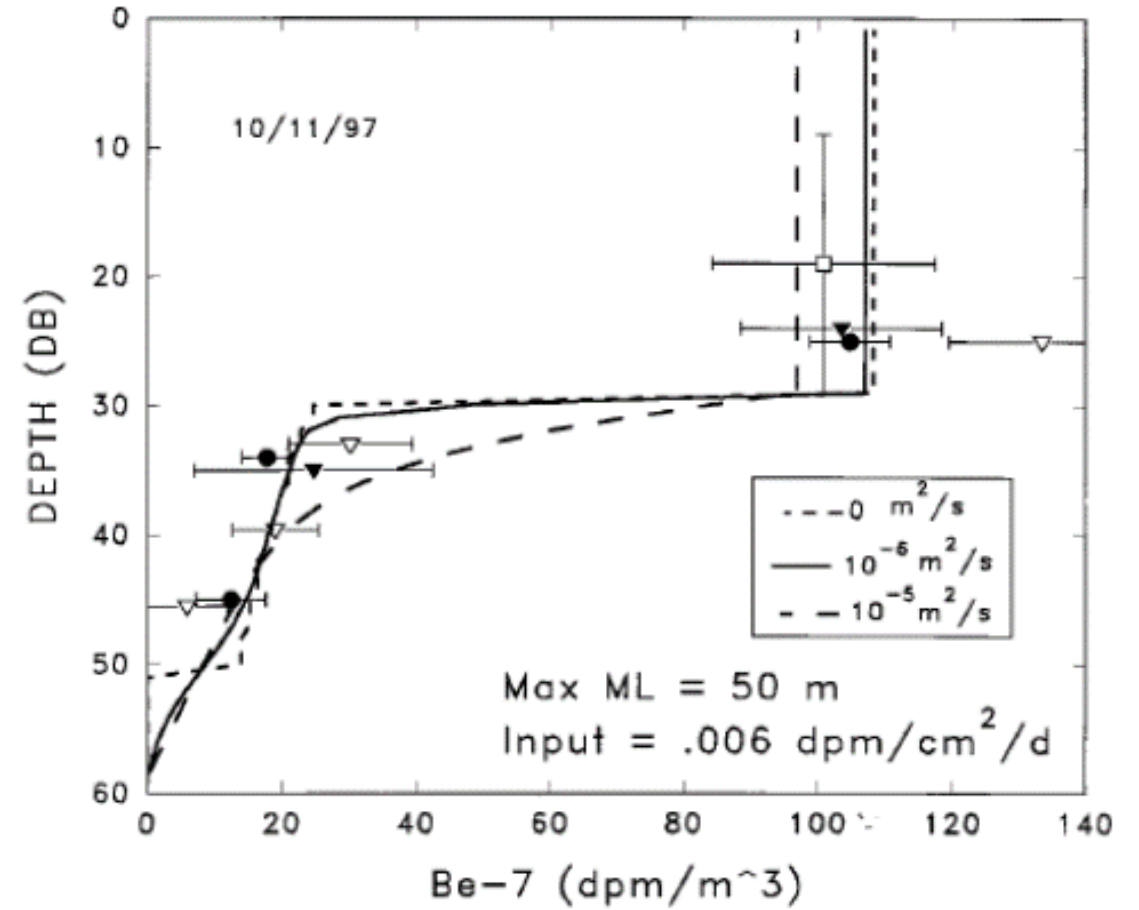


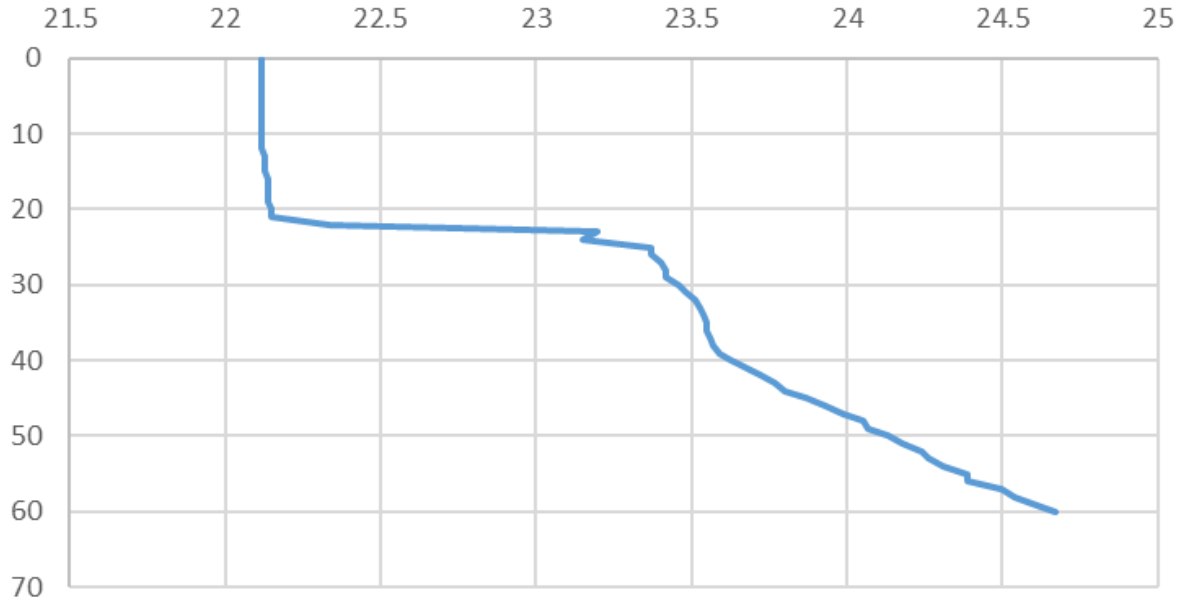
Temperature and salinity profiles from October 11, 1997



The model output for the 7Be profile at October 11, 1997 for three different values of K_z in the pycnocline: 0, 10^{-6} , and $10^{-5} \text{ m}^2 \text{ s}^{-1}$

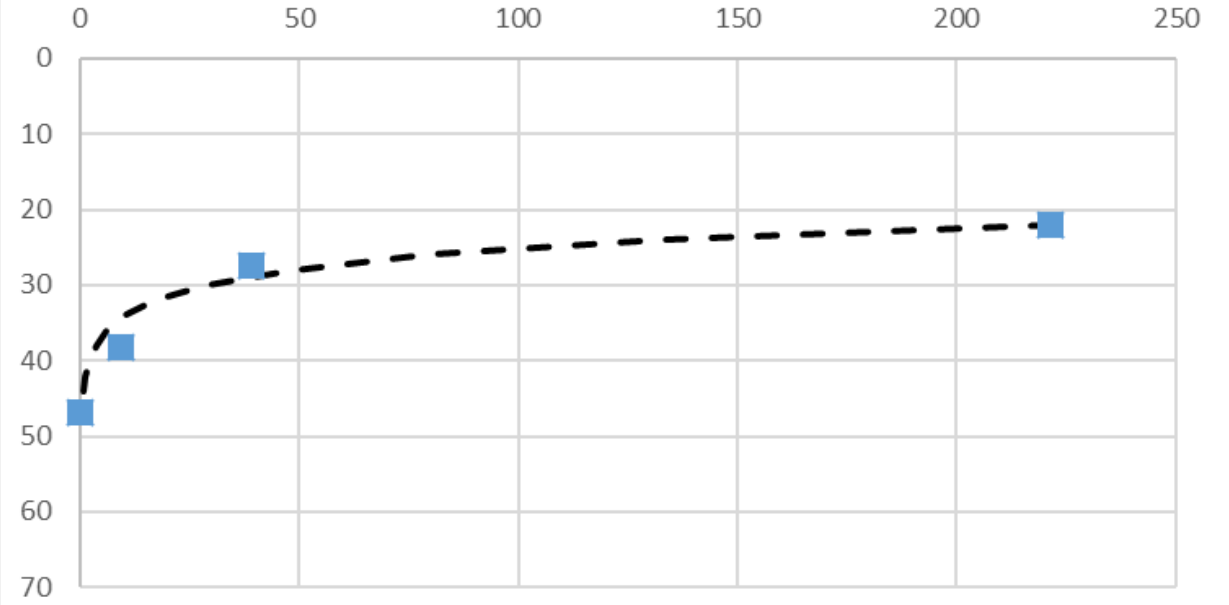
Kadko

Density



Density from US GEOTRACES Station 33, Sept 27, 2015

⁷Be (dpm/m³)



⁷Be and modeled profile using $2.3 \times 10^{-6} \text{ m}^2/\text{s}$

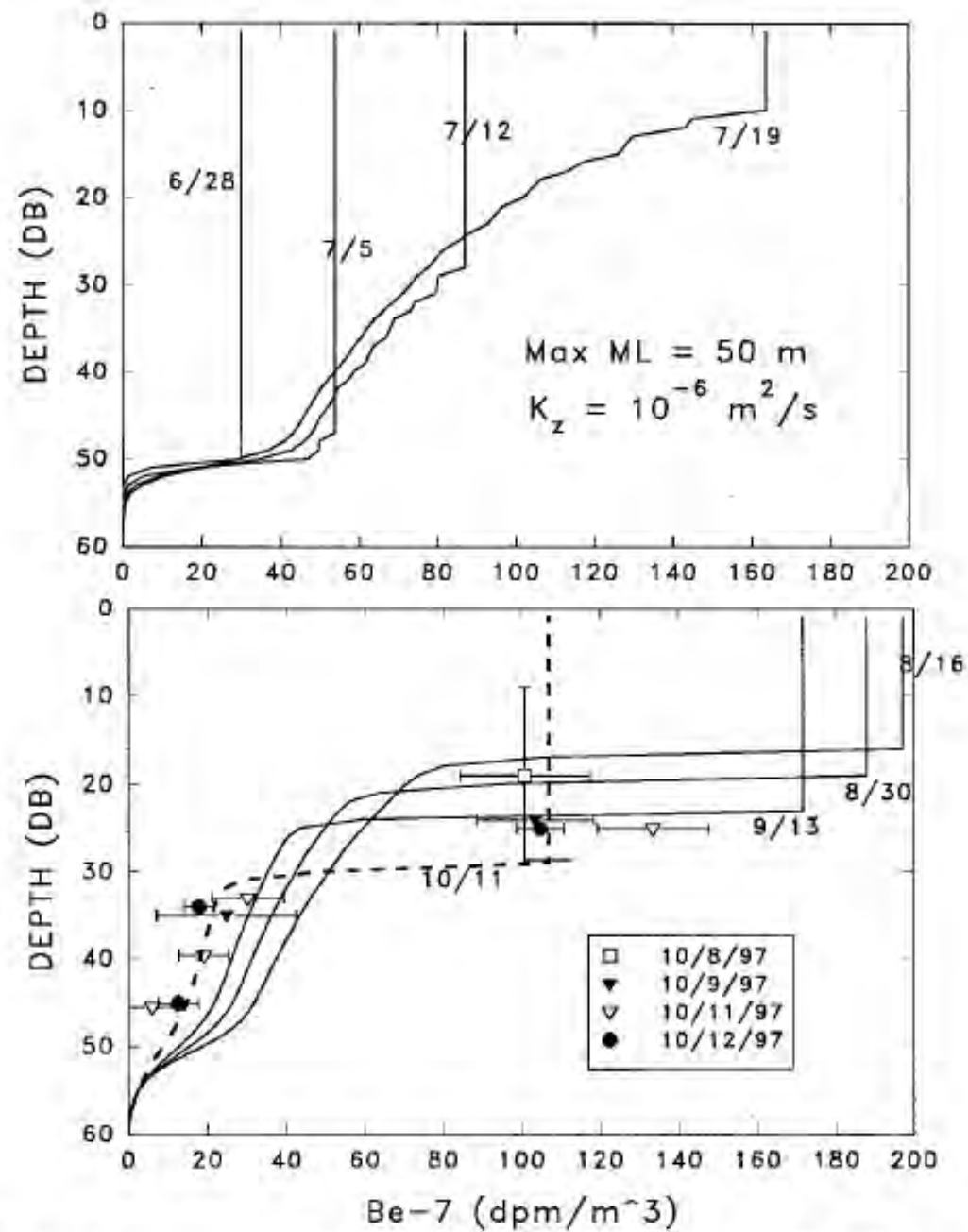


Figure 6. The model output showing the evolution of the ${}^7\text{Be}$ profile at SHEBA with time. Data from the period October 8–12 are superimposed upon the model profiles. The model profile for October 11 is shown as a dashed line.

Still interested in MIZ paper!

Jessica Fitzsimmons and others