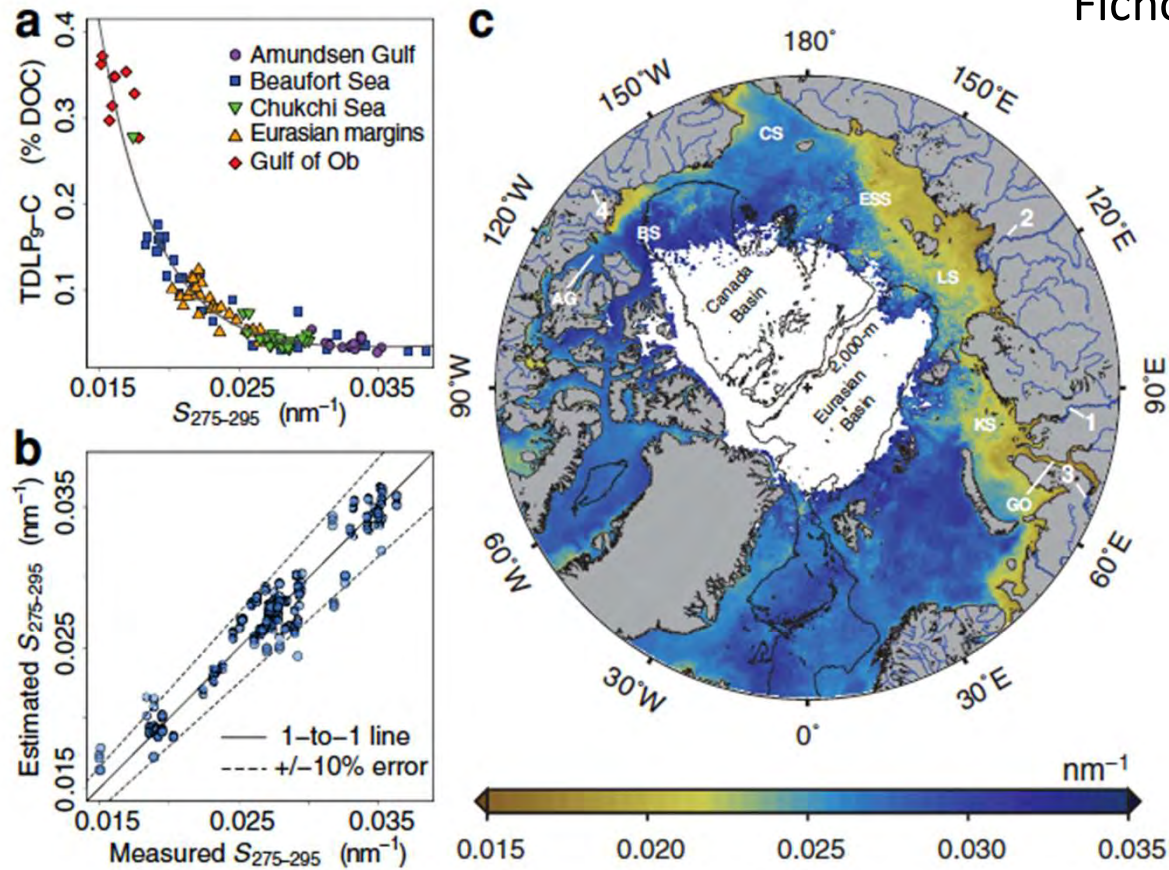


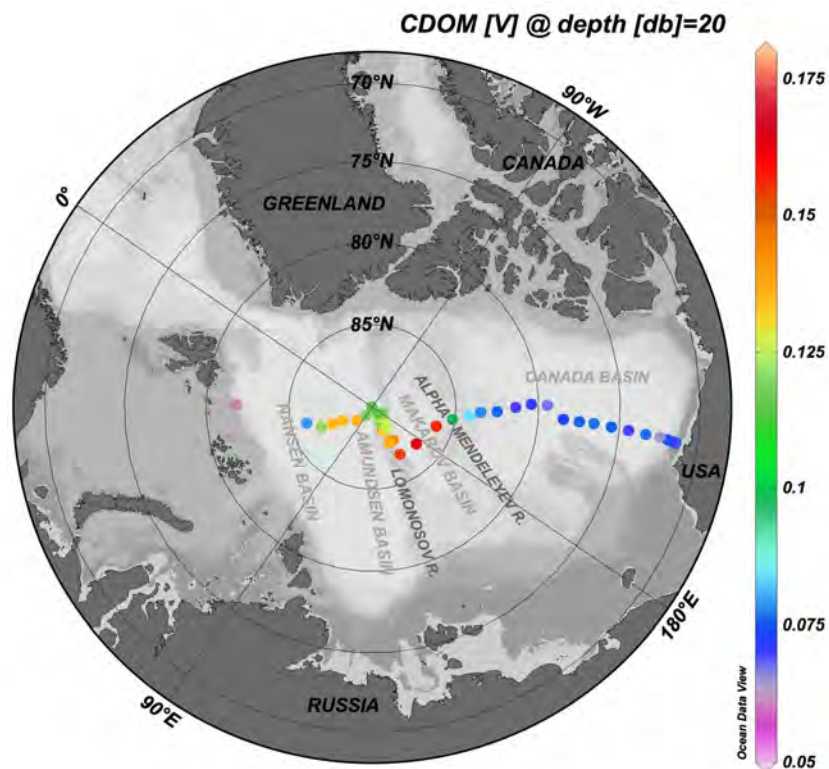
Surface distribution of terrigenous dissolved organic matter (satellite based)

Fichot et al., 2013



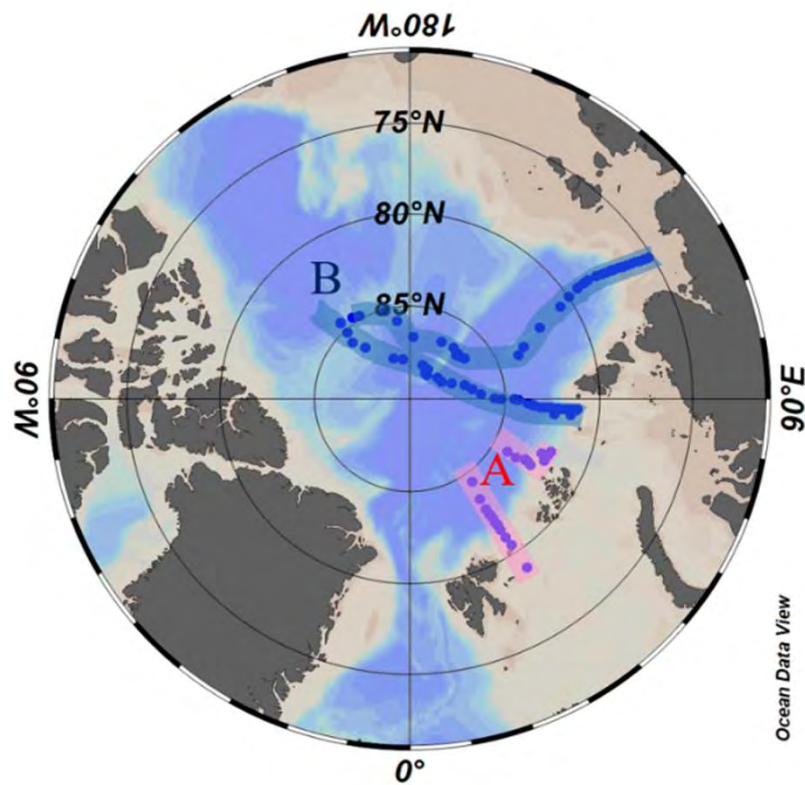
# AOS 2005 - Oden

Haardt in situ fluorometer (excitation 360-450nm; emission 550nm)



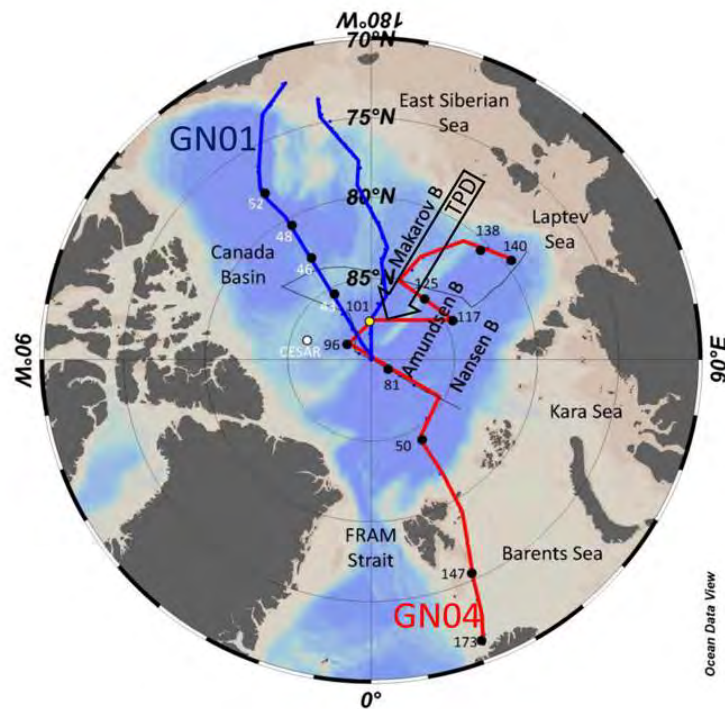
# ARK XXII-2 2007 - Polarstern

Haardt fluorometer model 1 and 2 and WetLabs CDOM fluorometer  
(excitation 370nm; emission 460nm)

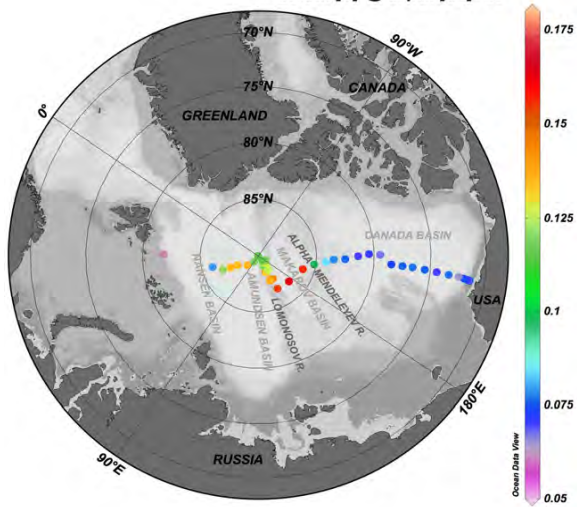


# Arctic Geotraces 2015 – Healy and Polarstern

**Haardt fluorometer model 1 and 2** (excitation 360-450nm; emission 550nm)

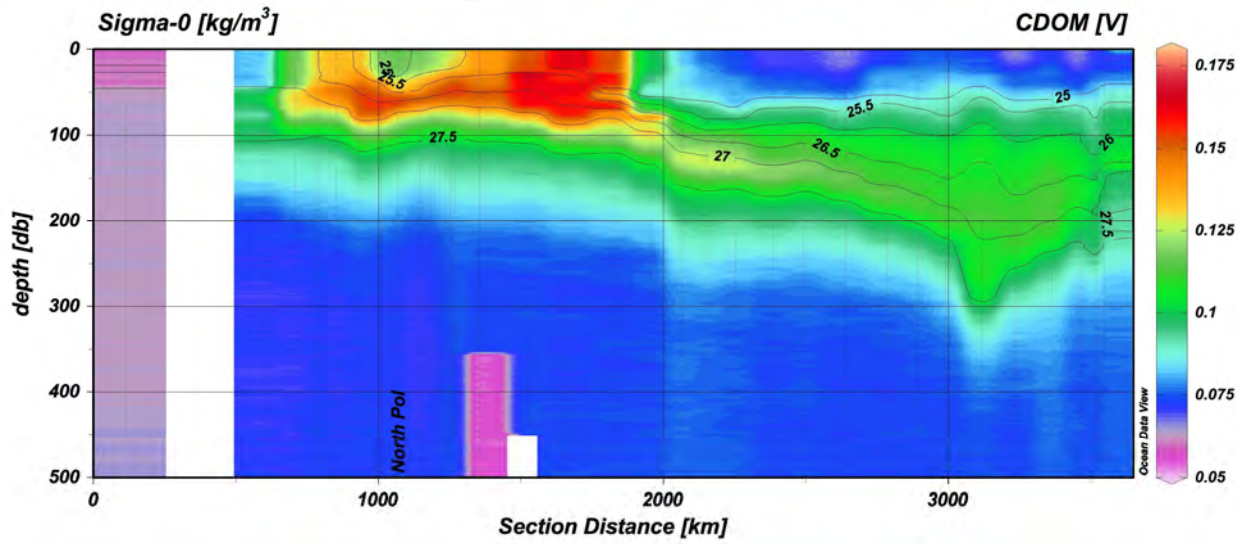
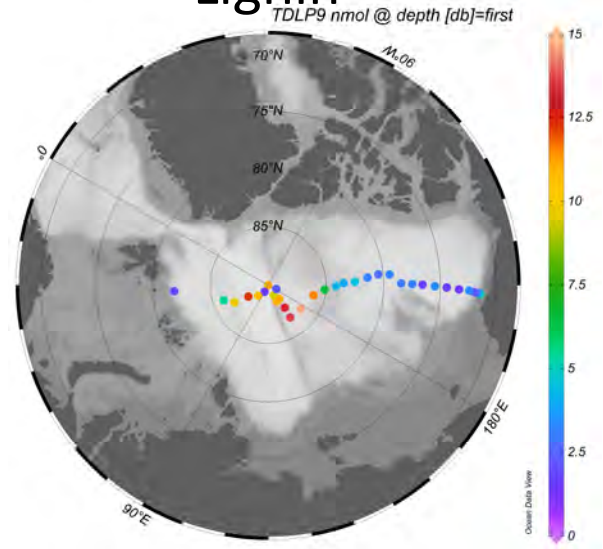


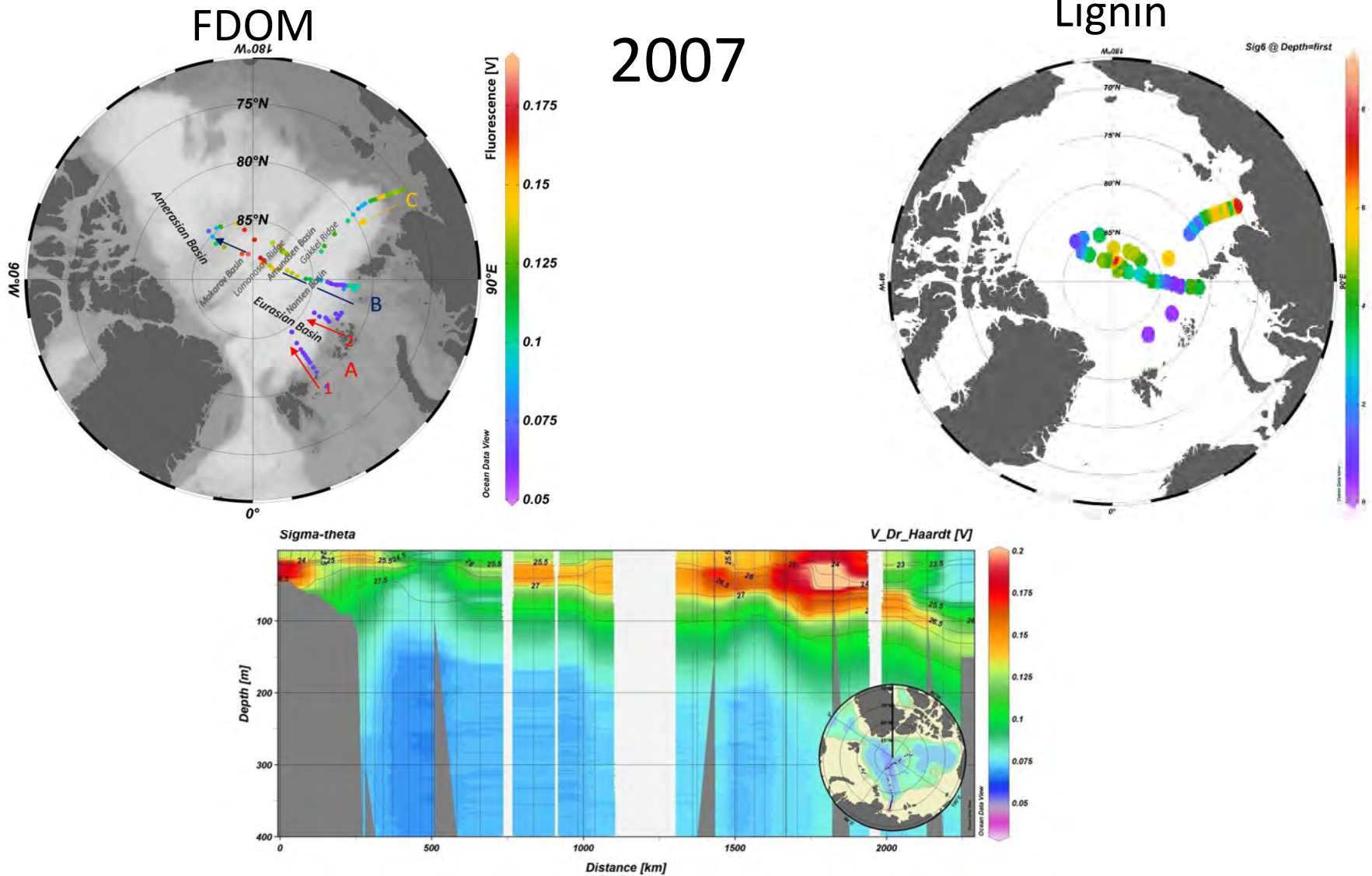
### FDOM



# 2005

### Lignin

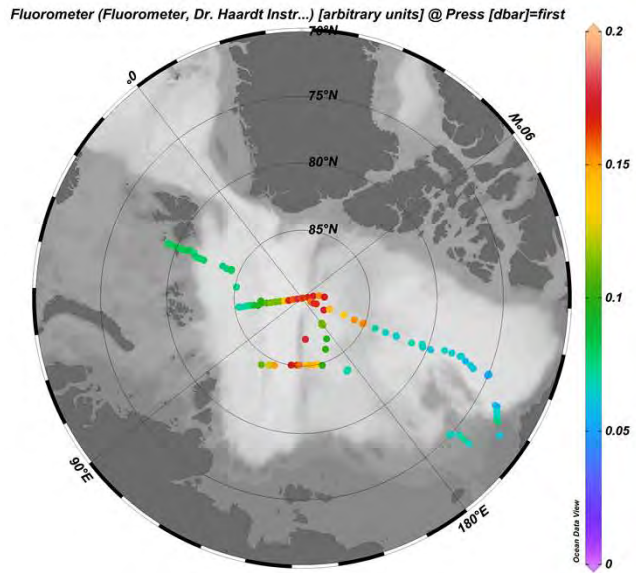




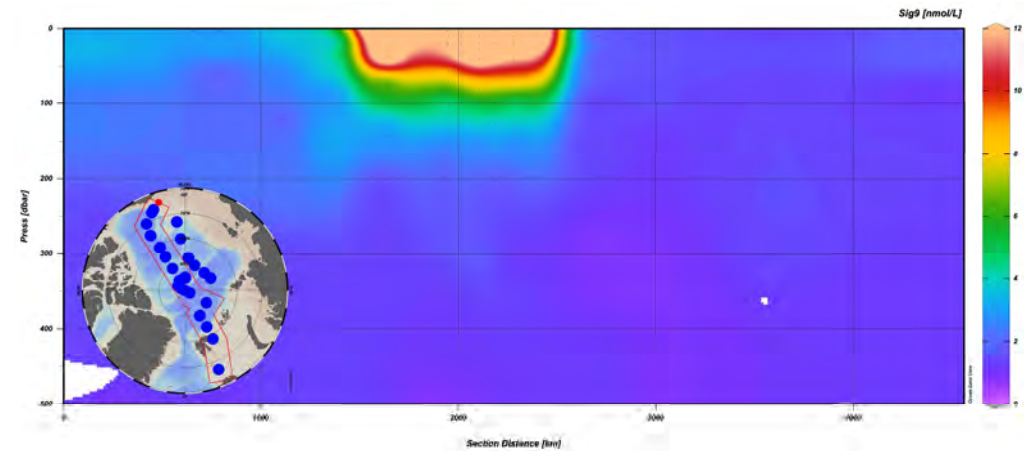
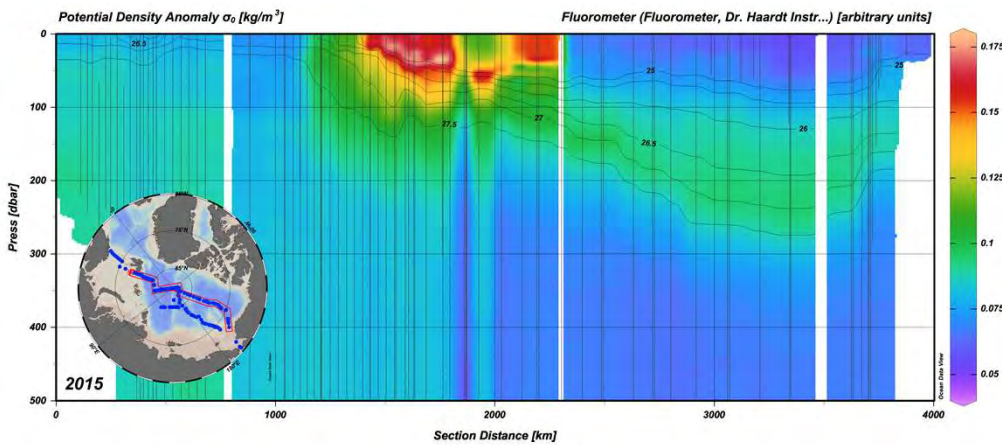
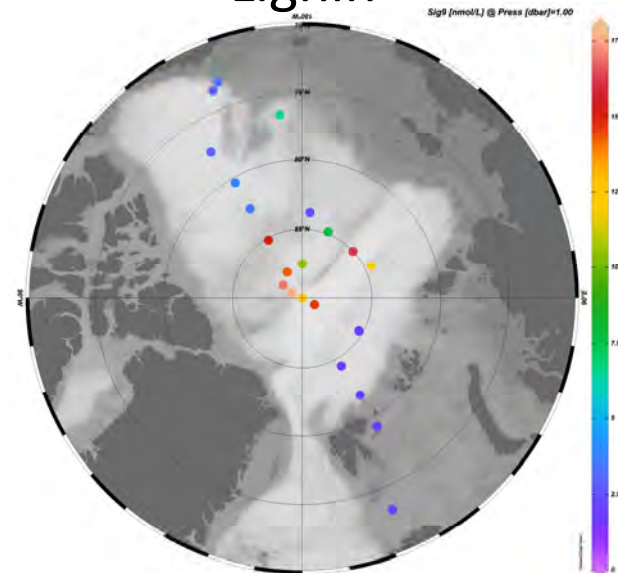
Williford et al. 2021. Insights into the origins, molecular characteristics and distribution of iron-binding ligands in the Arctic Ocean. *Marine Chemistry*

2015

FDOM



Lignin

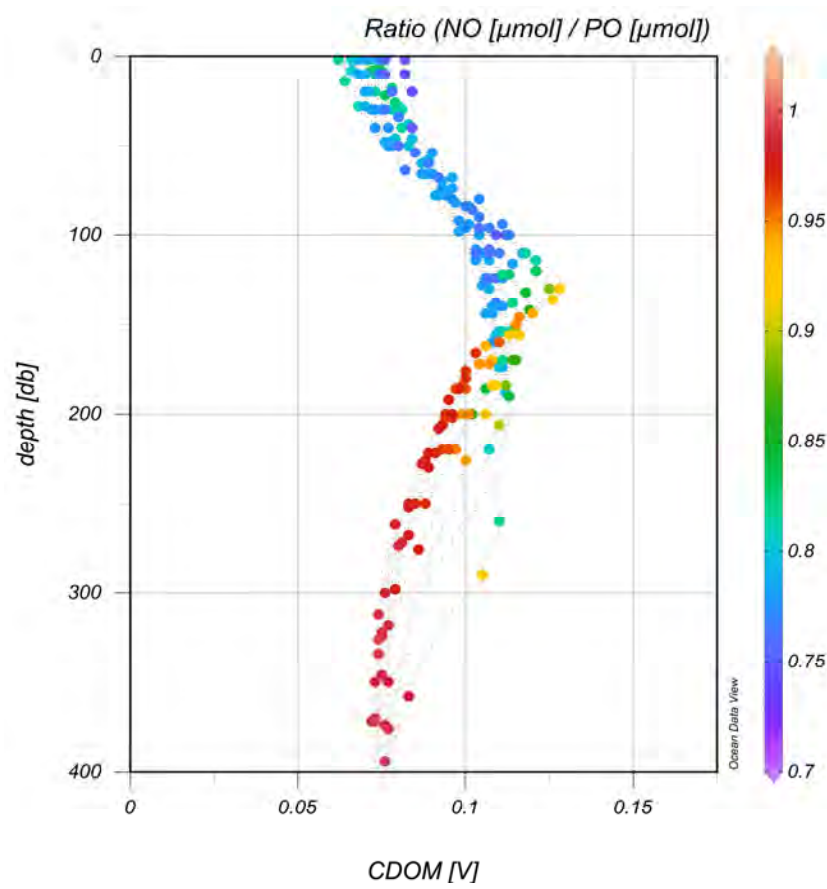


Stedmon et al. 2021. Insights Into Water Mass Origins in the Central Arctic Ocean From In-Situ Dissolved Organic Matter Fluorescence. JRG Oceans

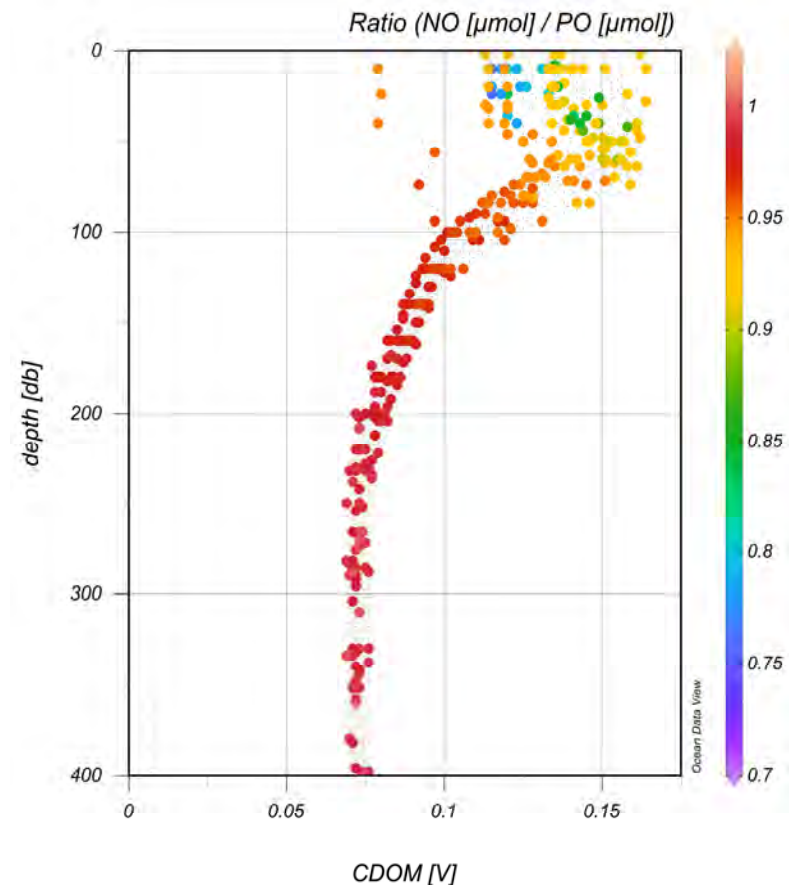
Williford et al. 2021. Relationship between dissolved organic matter, hydrography and trace elements in the Arctic Ocean. in preparation for JGR Oceans

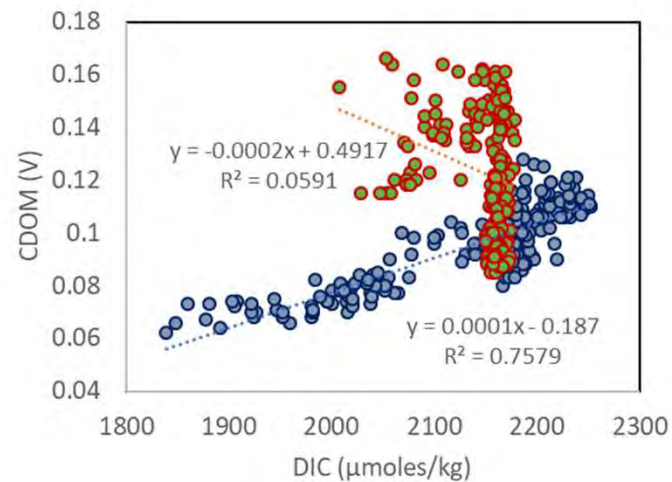
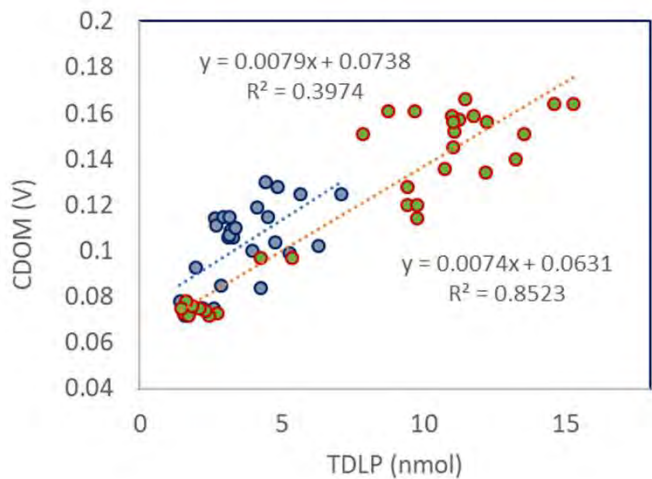
2005

Canada Basin

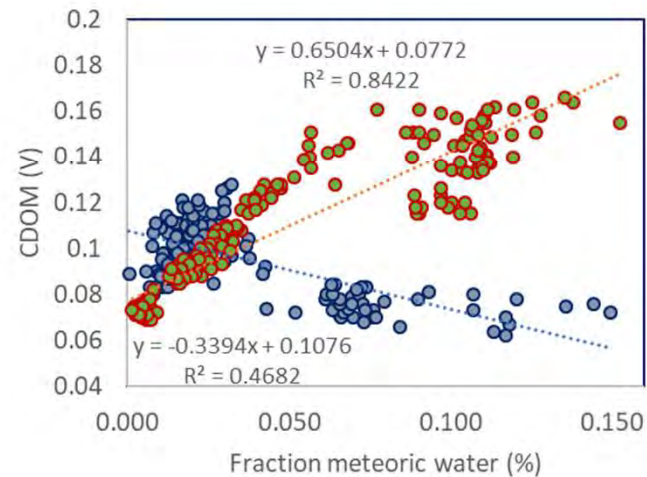
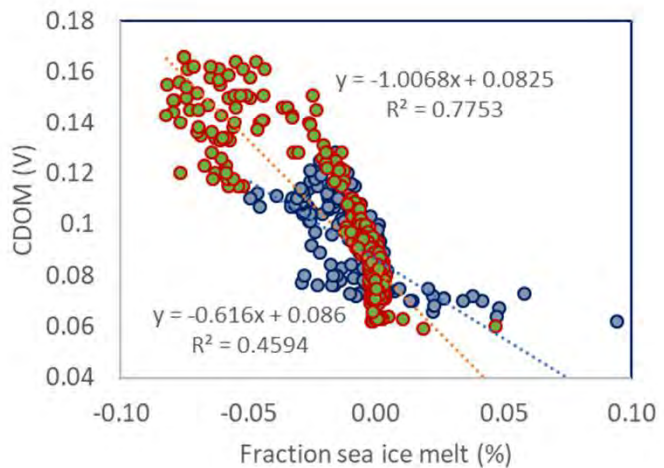


Eurasian Basin

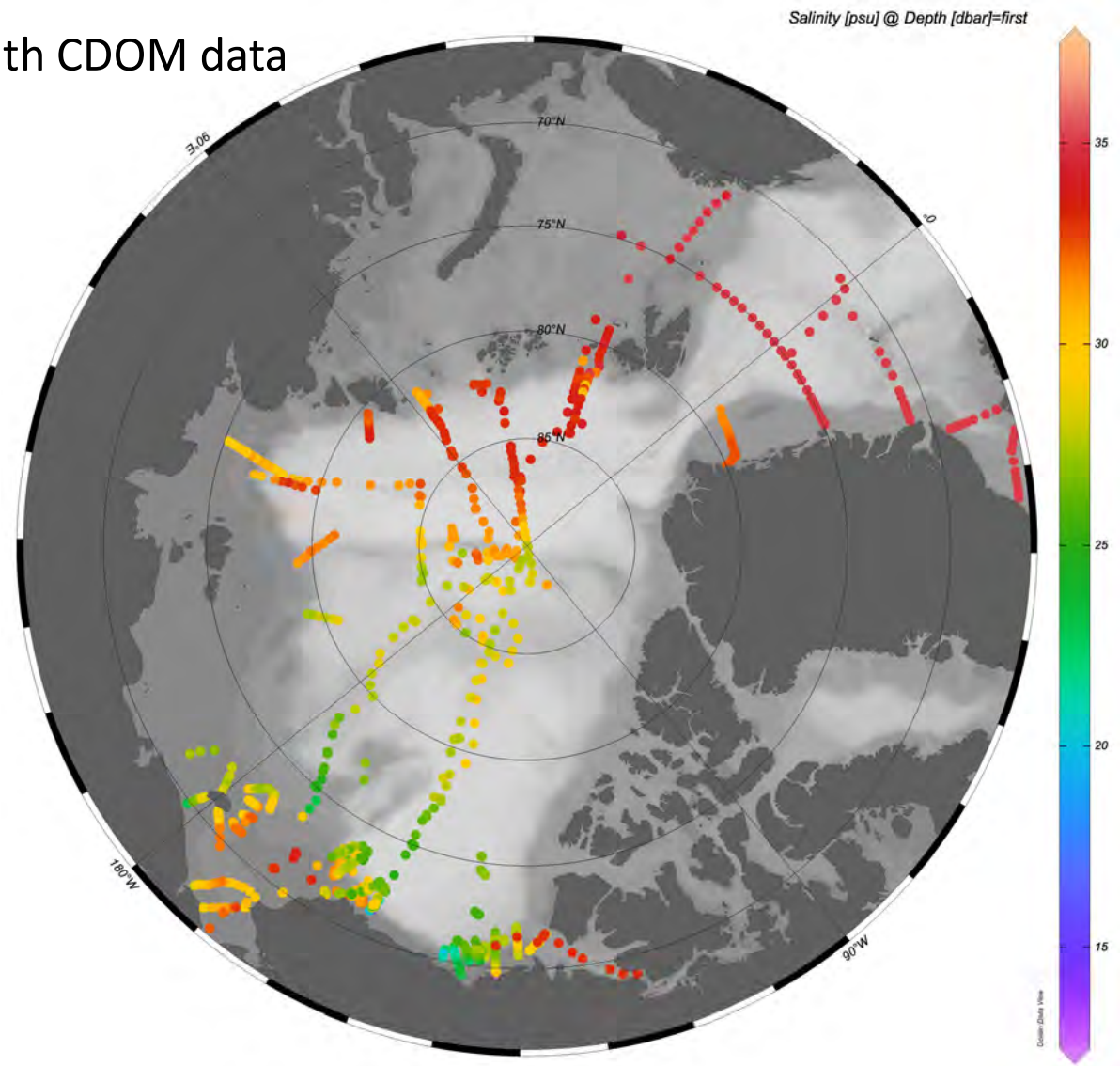




2005



Cummulative stations with CDOM data  
1993 - 2015



Working on a plan to establish a cooperation with Russian institutions to work on the Eurasian Shelf

- AARI in St. Petersburg we visited last fall  
Contact: Mikhael Makhotin
- Northern (Arctic) Federal University (NArFU) in Arkhangelsk. They run the **Arctic Floating University**– Cruises every summer to the Barents Sea working on Kara Sea; price per berth 380 000 rubles or 5,500 U\$; student focus;  
Contact: Konstantin Zaikov and Alexander Saburov
- Zubov State Oceanographic Institute (ZSOI) in Moscow under Federal Service of Russian Federation for Hydrometeorology and Environmental Monitoring (ROSHYDROMET)  
Contact: Sergei Tambiev

